

SUSTAINABLE DEVELOPMENT FEE

BHUTAN



WHAT IS SDF?

The Sustainable Development Fee (SDF) is a fee imposed by the government of Bhutan on visitors entering the country. This fee is used to support sustainable tourism and environmental conservation initiatives in Bhutan.



SDF FOR INDIAN TOURISTS

Fee: ₹1,200 per adult per night.

For Kids:

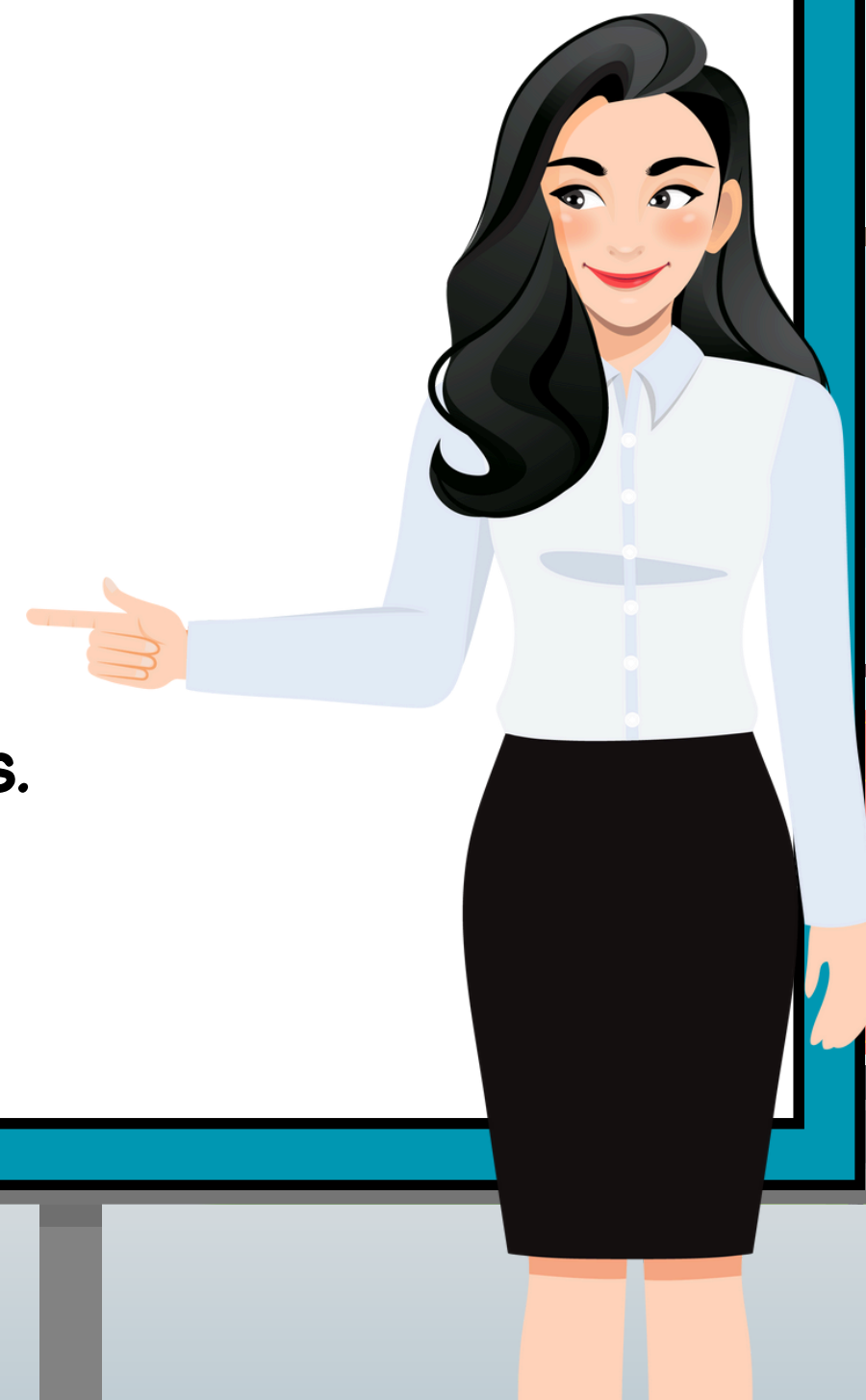
Under 5 years: Free.

Aged 5-12: 50% discount.



PAYMENT INSTRUCTIONS

- The SDF must be paid in cash only at the Immigration counter in Phuntsholing or at Paro International Airport.
- The SDF is not included in our Bhutan holiday packages and must be paid directly at the immigration counter to obtain your entry permit.
- Paro Airport does not have ATMs, so ensure you carry enough cash from India.
- Credit cards, debit cards, and UPI are not accepted for SDF payments.
- ₹200 notes are not accepted for SDF payments.



**Please always share this information
with your customers before you
make a sale. Let's make sure they
have all the details!**



THANK YOU

FOR MORE IMPORTANT INFORMATION, FOLLOW OUR LEARNING WEBSITE,

